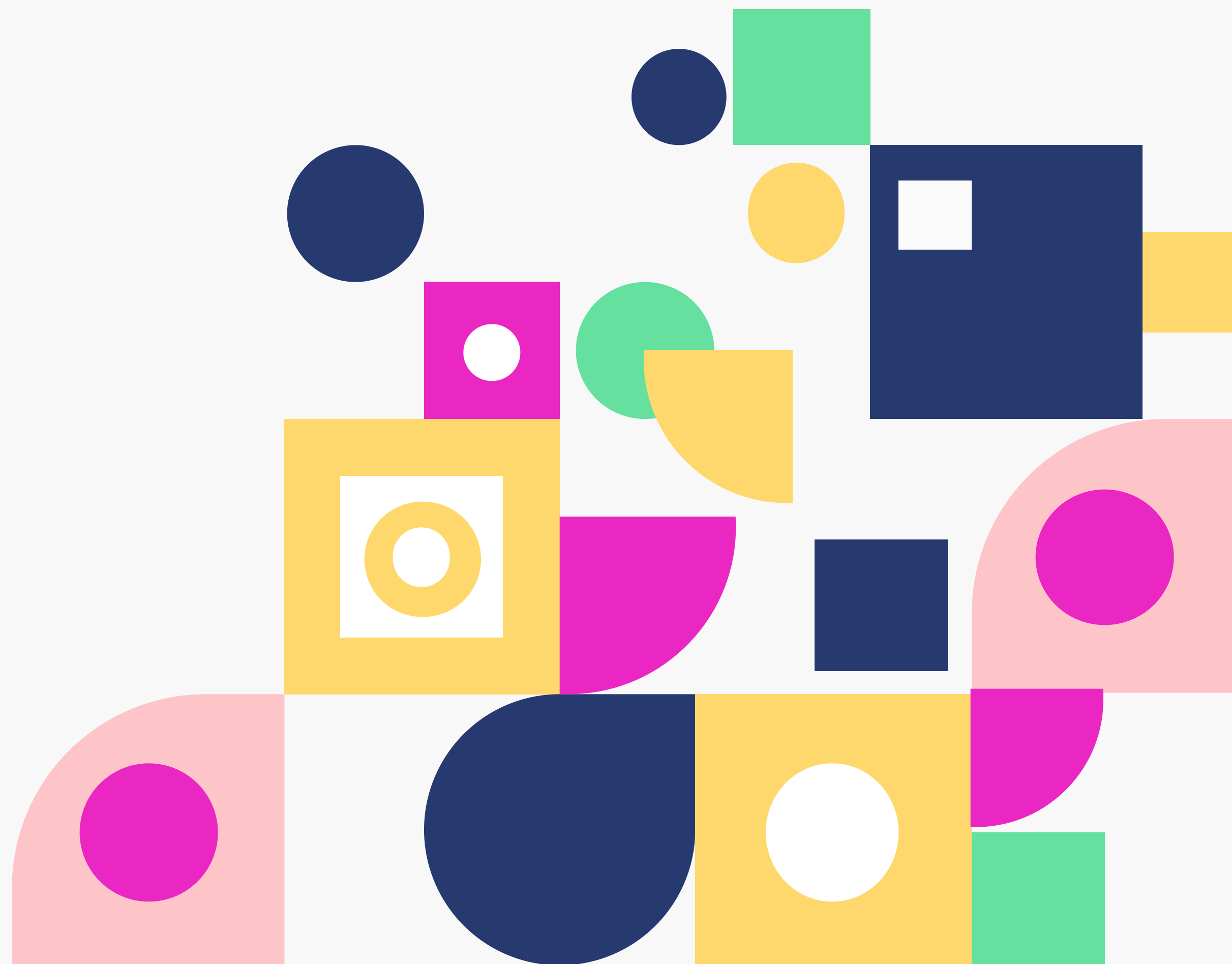




Hypermedia Hyperdrive

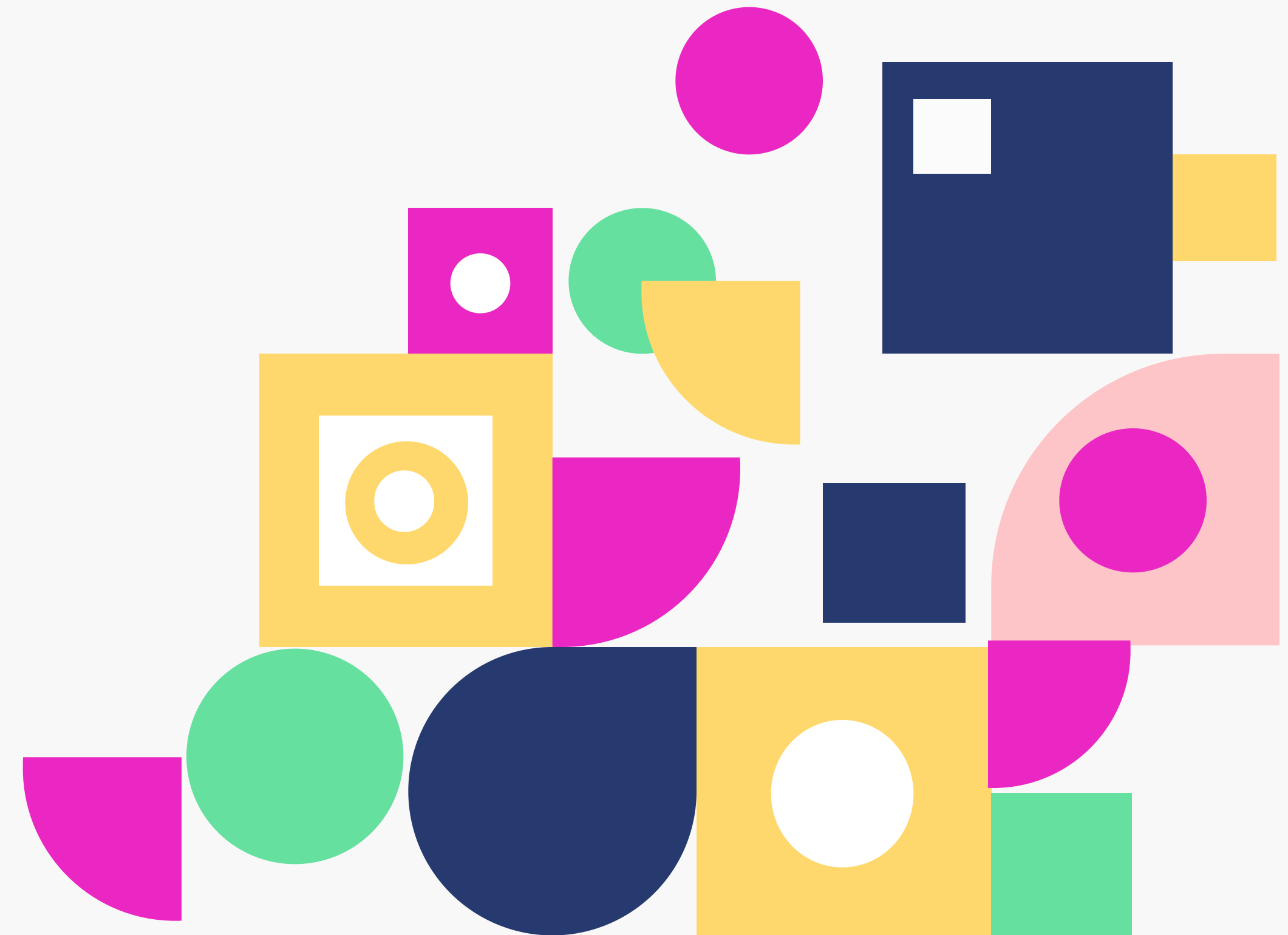
Decentralized file storage, **smarter.**



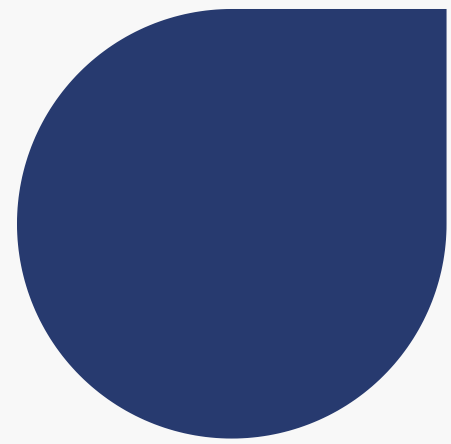
Bring files to the Web 3.0

Cherry is a blockchain with decentralized storage accessible by smart contracts in runtime

- **Private & Secure:**
State of the art cryptography
encrypting files and proofing transactions
- **Massively Scalable:**
25,000+ transactions per second
at micro-second latency
- **Production Ready:**
Rich SDK and modular Wasm
execution environments

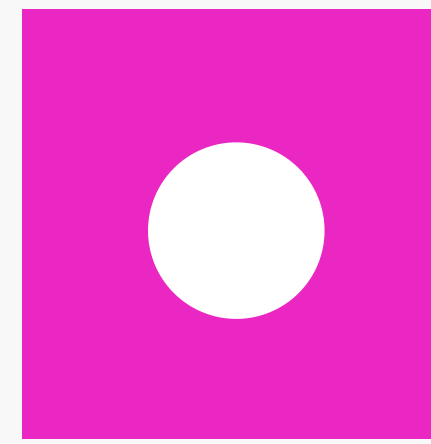


What's Possible with Cherry



True Ownership

Enjoy censorship-resistant control over your digital assets, backed by cryptographic proofs, and enforced by a distributed stake-based consensus.



Trustless Access

Construct complex authorization abstractions to set who can view your data and what can they do with it, through non-authoritative native runtime executions.



Decentralized CRUD

Read and write files on a network of distributed storage providers directly from runtime system calls in the the Cherry Virtual Machine.

Decentralized File Storage: How it Was

Centralized
Cloud Storage



Altruistic
Distributed Storage



Distributed
incentivized storage



State of the art
storage



Incentivized Distributed Storage + Authoritative Oracle Interfaces.

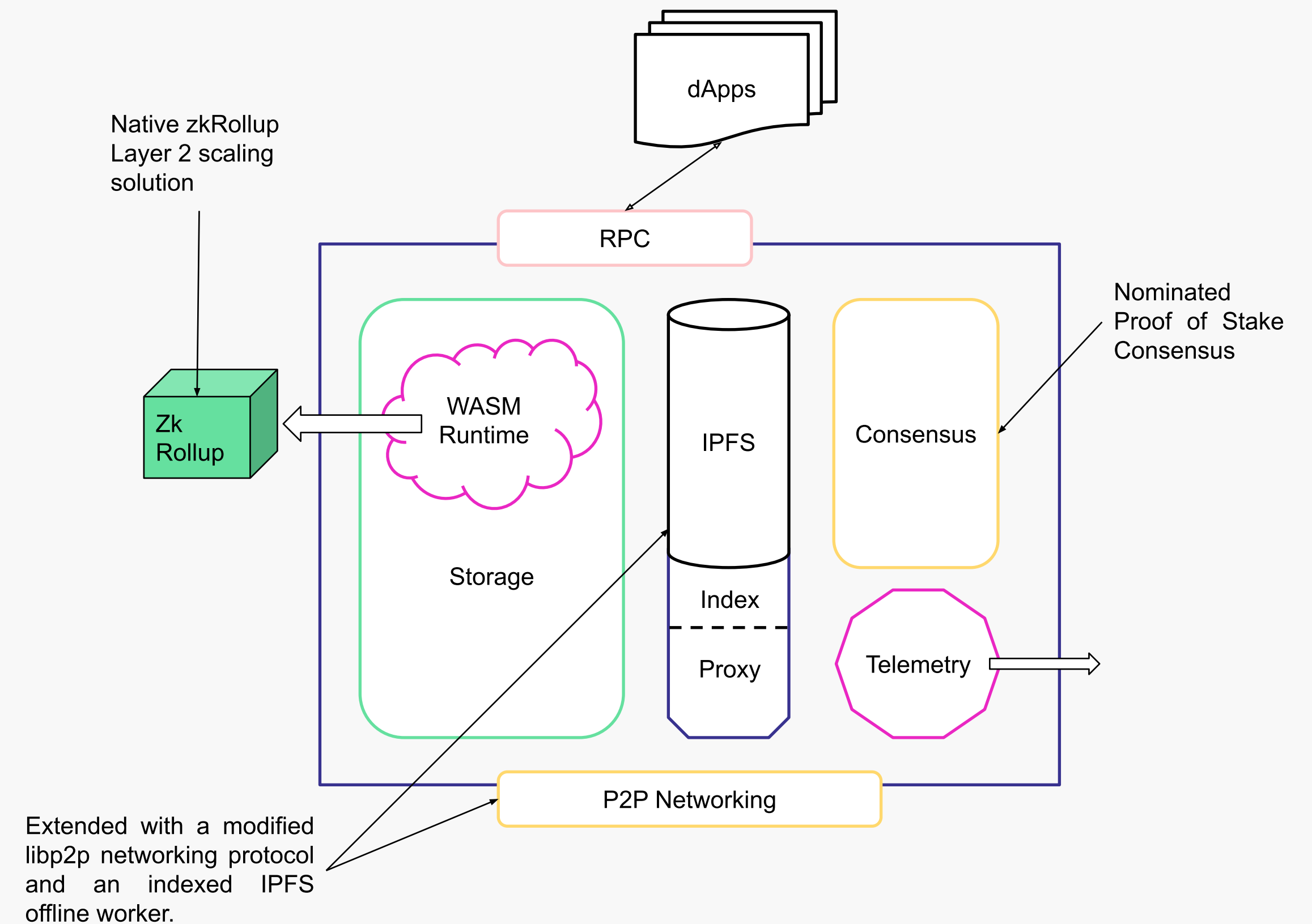
Connect smart contract execution runtime to decentralized file systems.

While storage indeed is distributed, and dApps execute transparently underpinned by consensus rules, the interaction between these two decentralized elements occurs through a **trusted interface**.

The Cherry Node

Cherry combines a powerful blockchain runtime and distributed storage in a single consensus-based network.

Cherry achieves **truly trustless** file storage and read/write operations.

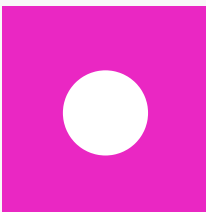


Features



Scalability

Transact at lightning speeds, with boundless throughput, while maintaining decentralization and security.



Interoperability

Access features on the Cherry Chain from across the cryptoverse and breathe new life to your smart contracts.



Censorship Resistance

No entity has control over the network, guaranteeing unrestricted access and no single point of failure.



Open Source

The community can review and contribute to the code to produce a stronger, transparent platform and an engaged ecosystem.



Tokenomics

The Cherry Token (CHER)

Cherry Token (CHER) is the Ecosystem's native token designed to empower the Cherry platform and foster a mutually beneficial relationship between investors, developers, and node operators.

An open monetary system for an open community.

- **\$0.036**
Public Token Release Price
- **~35% APY**
Interest for Staking & Validating
- **600 million CHER**
Total Diluted Market Capitalization
- **86.55 million CHER**
Circulating Supply at Launch

Community

Cherry is owned and operated by its community as a decentralized autonomous organization (DAO).

The Cherry Project is governed via a democratic and transparent voting system which allows all stakeholders to get involved and shape Cherry's future.

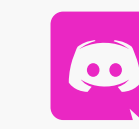
Number of investors in our waitlist: 6000+



Telegram
26k members



Twitter
37.8K followers



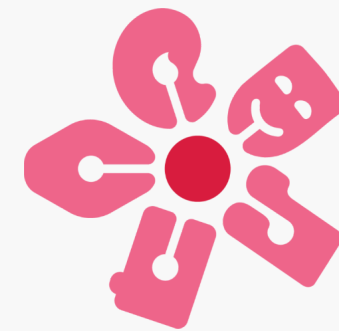
Discord
22k users

Ecosystem

30+ Projects have already committed to develop on Cherry Network



Bunkrs - Decentralized Cloud
User-Owner Encrypted File Storage



Cherish - Web 3.0
The Creators Network



Seedling - Decentralized Finance
Venture capital, reimagined



GameNFT - Non Fungible Tokens
Decentralized Pan-Entertainment



Cherry Labs
Accelerate dApps on the
Cherry Network and promote
developer adoption.



Roadmap

Q4 2021



Q1 2022



Q2 2022



Q3 2022

- Complete Private Sale
- Public Sale via IDO
- Exchange Listings
- Testnet launch
- Ecosystem Growth & Partnerships

- Mainnet launch
- Cross-Chain Interoperability Channels [BSC, AVAX, Tron, ETH, MATIC]
- Cherry Labs launch
- Hackathon & Grants
- Complete technical documentation & Whitepaper

- 50 Projects in the Cherry Ecosystem
- Integrate Plasm zkRollups
- Release CherryNet.js SDK
- Polkadot / Kusama Parachain
- Cherry Digital Identity Registry

- 100 Projects in the Cherry Ecosystem
- Avalanche Subnet
- Cherry Trustless Oracle
- DAO governance
- Channel Sharding



Team & Advisors



Seraphim
Chief Executive Officer



Romeo
Lead Cryptographer



Buer
Blockchain Architect



Danny Wu, Business Development
<https://www.linkedin.com/in/danny-wu-420102114>



Karan Vawsani, Legal Advisor
<https://www.linkedin.com/in/karan-vaswani-56ab728>



Harish Suthi, Cherry Labs
<https://www.linkedin.com/in/harishsuthi>



Alessio Vinassa, Business Development
<https://www.linkedin.com/in/alessiovinassa>



Partners & Investors



substrate



Figment



INFLUX.

